

ADDITIONAL RUNWAY INFORMATION

RWY	Landing Aids	USABLE LENGTHS		TAKE-OFF	WIDTH
		Threshold	Glide Slope		
10	HIRL				148' 45m
28	HIRL ① HIALS PAPI-L				

① Configuration unknown.

TAKE-OFF

	AIR CARRIER (JAA) All Rwys	
	LVP must be in force RCLM (DAY only) or RL	RCLM (DAY only) or RL
A		
B	250m	400m
C		
D	300m	

CHANGES: Runway width. Lights.

STRAIGHT-IN RWY		A	B	C	D
28	VOR ① ②	1200'(531') R1500m	1200'(531') R1500m	1200'(531') C2400m	1200'(531') C2400m
	NDB	1100'(431') C2200m	1100'(431') C2200m	1100'(431') C2400m	1100'(431') C2400m

- ① Continuous Descent Final Approach.  
② Missed apch climb gradient mim 3.3%.

CIRCLE-TO-LAND	A	B	C	D
	NOT AUTHORIZED			

TAKE-OFF RWY 10, 28			
LVP must be in force			
	RCLM (DAY only) or RL	RCLM (DAY only) or RL	NIL (DAY only)
A	250m	400m	500m
B			
C	300m		
D			

OSDZ/DEZ  
DEIR ZZOR

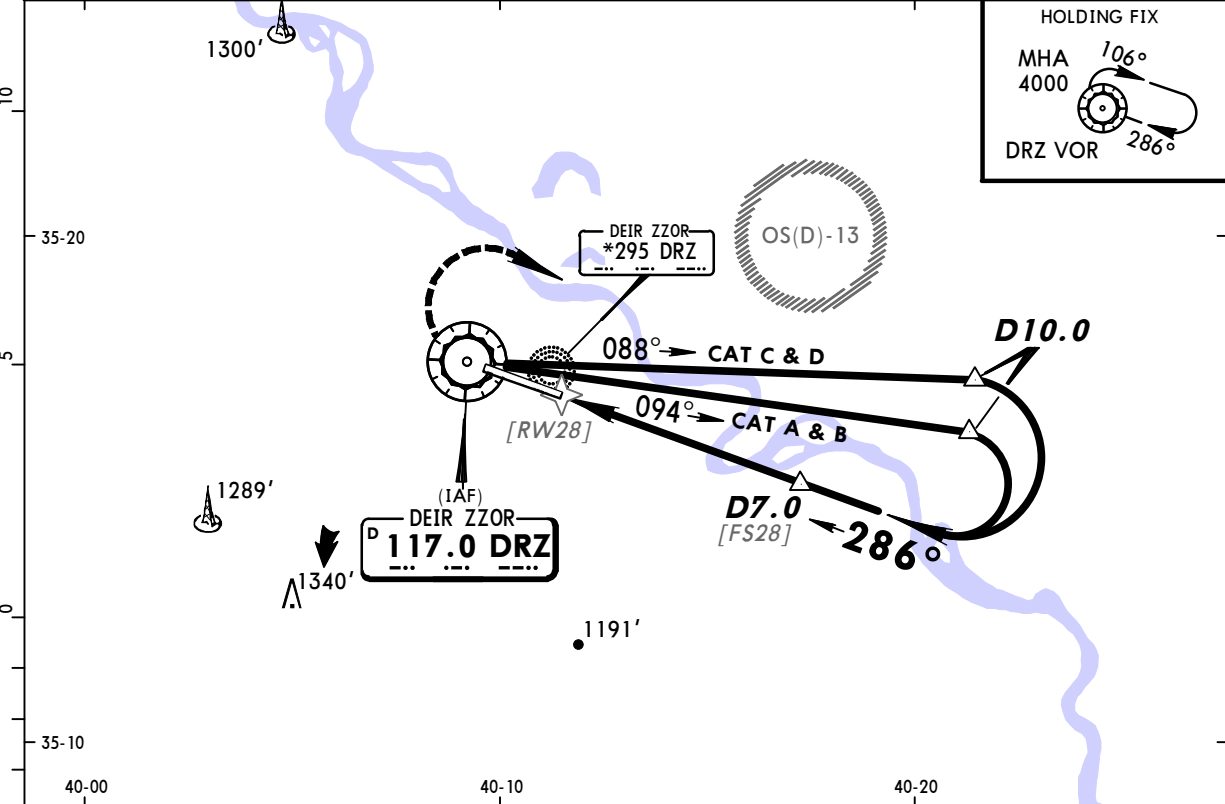
FOR SIMULATION USE ONLY

24 FEB 12 (13-1)

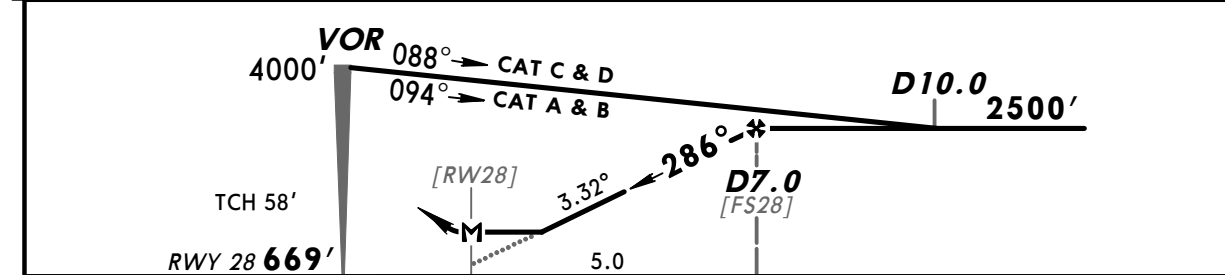
MISSED APCH CLIMB  
GRADIENT MIM 3.3%

DEIR ZZOR, SYRIA  
VOR Rwy 28

*DEIR ZZOR Tower				*Ground	
118.07				121.9	
VOR DRZ <b>117.0</b>	Final Apch Crs <b>286°</b>	Minimum Alt <b>D7.0</b> 2500' (1831')	MDA(H) <b>1200'</b> (531')	Apt Elev 700'	4000'
RWY 669'					
MISSED APCH: Climb STRAIGHT AHEAD. When reaching VOR turn RIGHT and climb in holding as directed. MAX 185 KT.					
Alt Set: hPa		Rwy Elev: 24 hPa	Trans level: FL 150		Trans alt: 13000'
1. DME required. 2. Procedure restricted to MAX 210 KT.					
					MSA ARP



DRZ DME	4.0	5.0	6.0	7.0
ALTITUDE	1450'	1800'	2150'	2500'



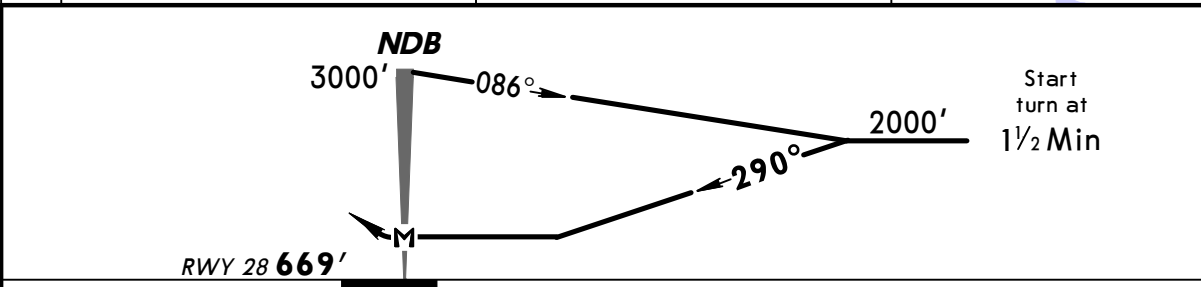
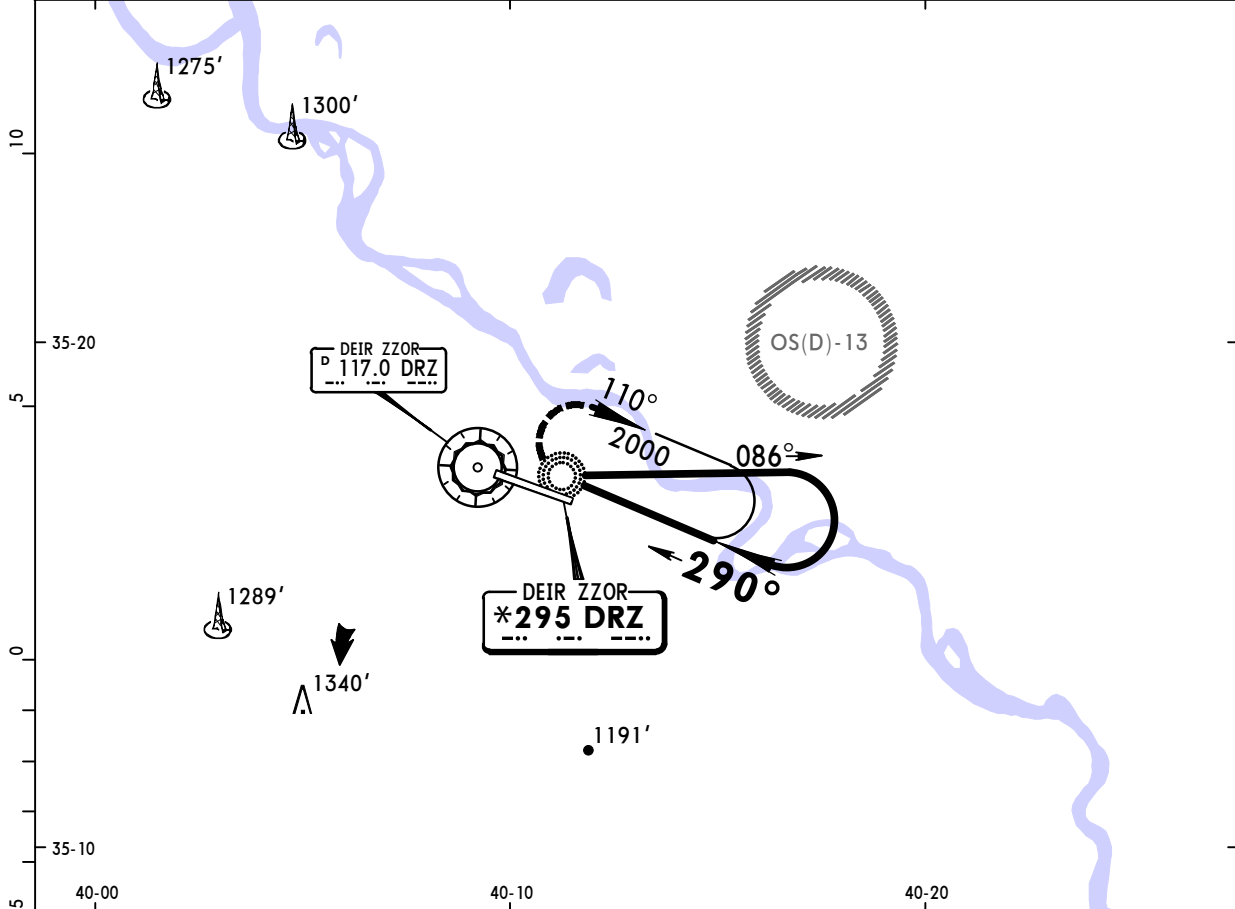
Gnd Speed-Kts	70	90	100	120	140	160	HIALS PAPI-L	185 KT MAX	117.0 DRZ ↑	
Descent Angle	3.32°	411	529	587	705	822				940
FAF to MAP	5.0	4:17	3:20	3:00	2:30	2:09				1:53

STRAIGHT-IN LANDING RWY 28				CIRCLE-TO-LAND			
Missed apch climb gradient mim 3.3%							
MDA(H) 1200' (531')							
ALS out							

PANS OPS	A	2400m	A	NOT AUTHORIZED
	B		B	
	C		C	
	D		D	

CHANGES: Altimeter setting. VOR ident. Descent Angle.

*DEIR ZZOR Tower <b>118.07</b>			*Ground <b>121.9</b>		
NDB DRZ <b>*295</b>	Final Apch Crs <b>290°</b>	Minimum Alt No FAF	MDA(H) <b>1100' (431')</b>	Apt Elev <b>700'</b> RWY <b>669'</b>	<p>MSA DRZ NDB</p>
<b>MISSED APCH: Turn RIGHT climbing in holding to 3000' and contact ATC.</b>					
Alt Set: hPa		Rwy Elev: 24 hPa	Trans level: FL 150	Trans alt: 13000'	



MAP at NDB				HIALS PAPI-L	110° RT	3000' ↑ in HOLDING
------------	--	--	--	-----------------	------------	--------------------------

STRAIGHT-IN LANDING RWY 28	
MDA(H) <b>1100' (431')</b>	ALS out

PANS OPS	A	1600m
	B	2000m
	C	2400m
	D	

CHANGES: Altimeter setting.